

**We are your partner for high-quality system solutions.**

// State-of-the-art automation technology requires innovative and intelligent solutions. As your partner for design and manufacturing we provide the optimal solutions in automation and quality assurance for industrial signal conditioning and image processing.

With our data processing sensor-actuator system we are capable of gathering any sensor data quickly and accurately, processing them and triggering the appropriate actions. The use of various image sensors furthermore makes the use of data processing cameras for application-specific image processing possible. Selecting and designing illumination facilities optimally adapted to your application is another element of our work.

With our competence and strong commitment we stand for a reliable partnership. We strengthen your competitiveness by providing comprehensive consulting, concerted support and efficient engineering. Thus, we assist you in reaching your targets more quickly. Because success to us is your competitive edge.

Let us realize your innovations together and we will guide you on your way from the idea to the start of production.



Werner Nophut, owner

Dipl.-Ing. **werner nophut**  
GmbH

Steigerwaldstrasse 11  
D-96191 Viereth

+49 (0) 9503 / 70 90  
+49 (0) 9503 / 77 79

www.nophut-gmbh.de  
info@nophut-gmbh.de

Partner:



Member:



Dipl.-Ing. **werner nophut**  
GmbH



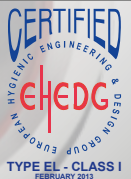
## **DCAM-HOUSING** Hygienic Design - Laboratory - Industrial

Data processing sensor-actuator system

**DSAM** | **DCAM**

Highly-precise intelligent modules with complete data and image processing in real time for flexible automation and quality assurance.

Casing(a)-HD



TYPE EL - CLASS I  
FEBRUARY 2013

# //HOUSING

// High-quality housings for image sensor and analyzing unit from the Dipl.-Ing. werner nophut GmbH and the company Photonfocus AG.

Optional customized designs.  
Please send us your requirements.

## HD Housing

- EHEDG certified
- TYPE EL - CLASS I FEBRUARY 2013
- Monitored manufacturing

Suitable for the following industries:

- Food
- Pharmacy

### Preferred materials:

- Housing: Stainless steel 1.4301 or 1.4305 electropolished
- Gaskets: PUR (Polyurethane)
- Pane: Glass, tempered

### Bore holes with thread for:

- Cable gland

## IA Housing and IG Housing

Special-purpose housings in two designs, for axial or angled connections.

Suitable for the following applications:

- Rough industrial environments
- Laboratory

Preferred materials same as for HD Housing

Recess for:

- Connectors

e-mail to [info@nophut-gmbh.de](mailto:info@nophut-gmbh.de) or call us under +49 9503 7090

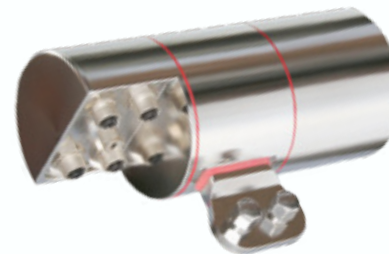


Casing(a)-HD

## HD: Hygienic Design



IA: Industrial, axial



IG: Industrial, angled

### Description of Terms:

Lens protected by **lens protection** pane.

**Camera** with **mounting facility** is the center segment of the housing and includes the electronics.

**Connection** denotes the area of the cable entry or the connectors.

- HD** - Hygienic Design with cable entry
- IA** - Industrial design. Axial connectors
- IG** - Industrial design. Angled connectors

### Dimensions:

Specified in mm, accurate outside, approximative inside

Lens protection:	Outside:	Inside:
	d = 86	d = 70
	l = 80	l = 60

Camera:	Outside:	Inside:
	d = 86	d = 76
	l = 70	l = 66

Mounting facility:	Width:	Height:
	b = 58	h = 45
	Bore hole spacing for M8:	
	a = 26	

HD connection without cable gland:	Outside:	Inside:
	d = 86	d = 76
	l = 45	l = 41

IA connection without connectors:	Outside:	Inside:
	d = 86	d = 76
	l = 33	l = 26

IG connection without connectors:	Outside:	Inside:
	d = 86	h = 35
		Arc
	l = 58	l = 53